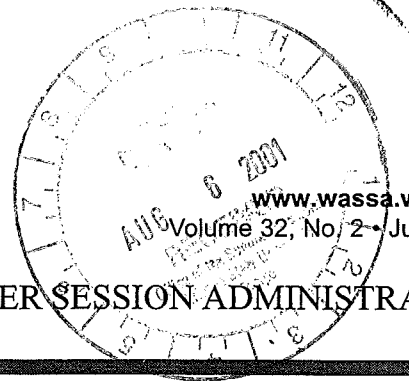




WASSA



WESTERN ASSOCIATION OF SUMMER SESSION ADMINISTRATORS

Letter from the President

OFFICERS
President
David Nyman

Past President
Paul Aizley

President-elect
Carol Switzer

Treasurer
Martin Barry

Secretary
Karen Orser

DIRECTORS
Bil Kops
Robert Mann
Linda Schoepflin

COMMITTEE CHAIRS
Annual Meeting
Carol Switzer

Archivist
Charlie White
(emeritus)

Catalog
Linda Williams

Communications
Martin Barry

Exemplary Programs
Dan Wick

Marketing
Gary Penders

Membership
Martin Barry

Nominations
Michele Price

Professional Standards
Gary Penders

Research
Shirley Lucas

Resolutions
Claire Cross

Summer is underway and in full swing on all of our campuses. I hope that all of you are planning for the great conference that we have planned for September 26-30 in Las Vegas at the Tropicana Hotel. You will soon be receiving your registration materials. Also, if you have not paid your 2001 dues, please get them to **Martin Barry** as soon as you can.

Our good WASSA friends **Dori Gibbs** and **Karen Skinner** who were on a retirement journey to celebrate Karen's retirement, spent a couple of days with my wife and me at our cabin at Panguitch Lake, Utah. Karen seems to be adjusting to the new retired lifestyle already, and of course Dori is really in the retirement mode. It is hard to see great friends like these two leave the WASSA organization, but I guess that many of us are looking forward to the day when we can do the same. Both of these great ladies have been presidents of WASSA, and Dori was also the president of NAASS. We will miss these two at our conferences and all of the contributions that they made to our organization.

The summer enrollment here at SUU is good, and we have added an intense E.M.T. course which has turned out to be quite popular. (Also, it is a good money maker for us.) We are running 336 different courses this summer for credit plus several non-credit ones. One of our more popular (and expensive) courses is the Archaeology Field

School where the participants are gaining experience in excavation techniques and the recording of archaeological data. We have several on line and independent study courses available too, which has made for a very busy summer for my assistant **Ryan Durfee** and me, since we are the entire summer staff.

Have a great summer. I am looking forward to seeing all of you this September in the City of Sin.

C. David Nyman
President, WASSA

2001 Conference Information

HIT THE JACKPOT!

Register today for the WASSA conference, September 26-30, 2001. Call the Tropicana Hotel in Las Vegas (800) 634-4000 to confirm the low, low conference rates of \$69.00 for Wednesday and Thursday nights, and \$109 for Friday and Saturday nights. (For all you web surfers out there, please note that the Tropicana web site does not offer the conference rates.)

The Tropicana is located near the south end of the famous Las Vegas "Strip" (known officially as Las Vegas Boulevard) at the south east corner of "The Strip" and Tropicana Avenue. This is one of the busiest intersections in the world; there are probably 20,000 sleeping rooms with a half-mile of the hotel.

President-elect **Carol Switzer** of Arizona State has planned a great conference. The President's reception will be held on the UNLV campus Thursday evening at the Hotel College Gaming Institute.

This year's conference setting offers not only the usual great workshops, committee recognitions, and idea sharing, but also unlimited opportunities for entertainment and outdoor recreation. Plan now for a fantastic conference at the entertainment and resort capital of the world.

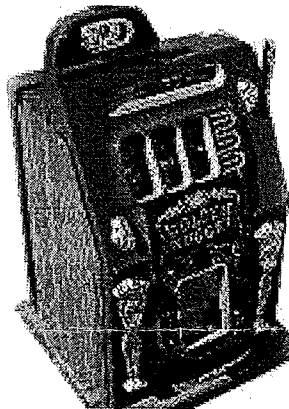
NAASS 2001 Conference

The 38th Annual North American Association of Summer Sessions (NAASS) will be held in San Diego, California at the Holiday Inn on the Bay from November 16-19, 2001. The University of California, San Diego is the host.

For further information, contact **Terri Branson** (858) 534-4365.

Hit the Jackpot

Plan now to attend the WASSA 2001 Annual Meeting and "HIT THE JACKPOT". All participants will have numerous opportunities to reap benefits from this year's sessions. Whether it's 2:45 a.m. and a field trip to secure Krispy Kremes and share ideas with colleagues, or 2:45 p.m. and a session on our most important customers - the students, the 24 hour Las Vegas day will be packed with WASSA 2001 participant activities. See you there.



President-elect
Carol Switzer

Viva Las Vegas

Las Vegas has evolved from its reputation as an adult theme park known only for gambling, cocktails and showgirls into a family tourist destination. The city is host to activities and attractions to please almost any interest. The following are just a few recommendations within walking distance of the conference hotel.

Bellagio Fountain Shows – Watch water dance to music ranging from Pavarotti to Sinatra on the Bellagio's eight-acre lake. The 15-minute shows are free and start every 30 minutes from 7 p.m. – midnight, daily.

Buccaneer Bay Pirate Battle – The Treasure Island Casino is equipped with a full-size naval ship that comes under attack from pirates every day. This mock battle ends with the sinking of the ship. The show is free and happens daily at 4, 5:30, 7, 8:30 and 10 p.m.

Manhattan Express Rollercoaster – Take the extreme route through New York's landmarks on this rollercoaster at the New York, New York Casino. Cost is \$5. Open 10:30 a.m. – 10:30 p.m. Monday-Thursday and 10:30 a.m. – midnight Friday-Saturday.

Eiffel Tower – A great view of the Strip, the city and the Bellagio's fountain show at the Paris. Cost is \$9 and it's open daily from 9 a.m. – 1 a.m.

Other Attractions

- **GameWorks** – 3799 Las Vegas Blvd S. (between E. Tropicana & Harmon Ave.)
- **Liberace Museum** – 1775 E. Tropicana Ave (between Maryland Pkwy & Spencer St.)
- **Freemont Street Experience** – between Las Vegas Blvd N. and Main Street
- **M&M's World** - 3769 Las Vegas Blvd. S. (between E. Tropicana & Harmon Ave.)

Other Resources

Check out these web sites for more details and suggestions on things to do in Las Vegas:

- **Time Out Guide** www.timeout.com/lasvegas/
- **Metro Guide** las.vegas.metroguide.net/
- **World Web Travel Guide**
www.lasvegas.worldweb.com/
- **Las Vegas Convention and Visitor Authority**
www.vegasfreedom.com/

Tidbits of WASSA History

- The Western Association of Summer Session Administrators is composed of four-year colleges and universities circumscribed by WASSA By-laws as "the western part of the United States, western Canada and Mexico."
- Currently represented are the Canadian provinces of Alberta, British Columbia, Manitoba, and Saskatchewan and the American states of Alaska, Arizona, California, Colorado, Hawaii, Idaho, Montana, Nevada, New Mexico, Oregon, Utah, Washington, and Wyoming. Membership totals 90 institutions and seven individuals.
- Although its constitution and by-laws were adopted in 1966, WASSA traces its origins to 1946, when a small group of summer session administrators met in Gunnison, Colorado and formed the Rocky Mountain Association of Deans and Directors of Summer Schools.
- Over the next decade institutions from states outside the Rocky Mountain area asked or were invited to participate in the association's annual meeting, and by 1963 the organization had changed its name to the Western Association of Deans and Directors of Summer Schools. The last name change occurred in 1967 when the constitution and by-laws were ratified.

WASSA 2002 Conference

The 56th Annual Conference in Hawaii will be on the lazy Garden Island of KAUAI Wednesday, September 4 through Sunday, Sept. 8, 2002 at the Radisson Kauai Beach Resort. Cost: \$130 +\$14 tax = \$130 (single or double occupancy)

Harriette Abe and **Victor Kobayashi** of the conference host institution, University of Hawaii, will be at the Las Vegas 2001 conference to provide more information.

HIT THE JACKPOT
WASSA, The 55th Annual Meeting, September 26-30, 2001
Las Vegas, Nevada, Tropicana Hotel
Hosted by the University of Nevada, Las Vegas

Preliminary Schedule

Wednesday, Sept. 26

4:00 – 6:00 p.m. Registration
 6:00 – 8:00 p.m. Taking it from the Top
 Opening Reception

Thursday, Sept. 27

8:00 a.m – 5:00 pm Registration
 9:00 – 10:30 a.m. The Best Bet
 Best of the Basics Workshop
 10:30 – 10:45 a.m. Break
 10:45 a.m.–12:15 pm The Best Bet (Continued)
 12:15 – 1:30 p.m. Mentor Lunch
 1:30 – 4:00 p.m. The Table is Open
 Roundtable Discussion
 4:00 – 5:30 p.m. Committee Meetings
 5:45 p.m. Busses leave for reception
 6:00 – 8:00 pm Don't Gamble with Your Money.
 President's Reception
 8:00 p.m. Dinner on your own

Friday, Sept. 28

8:00 – 10:00 a.m. Registration
 8:00 – 9:00 a.m. Informal Discussion
 9:00 – 10:00 a.m. Spotlight
 WASSA Websites
 10:00 – 10:15 a.m. Break
 10:15 – 11:45 a.m. Play the Numbers
 Catalog Reviews
 11:55 a.m–1:10 p.m. Lunch
 1:30 – 2:30 p.m. The Main Event
 Keynote Presentation
 2:30 – 2:45 p.m. Break
 2:45 – 4:30 p.m. On Stage
 Customer Service
 6:00 – 8:00 p.m. Conjure up the Winning Title
 World's Worst Art Show
 8:00 p.m. Dinner on your own

Saturday, Sept. 29

8:00 – 9:00 a.m. No host breakfast and discussions

9:00 – 10:30 a.m. Rave Reviews
 Research Workshop
 10:30 – 10:45 a.m Break
 10:45 –11:15 a.m Under the Marquee
 Marketing Discussion
 11:15 – 11:45 a.m. Show Stopper Programs
 Exemplary Programs
 11:45 a.m –12:30 p.m. Where Winners Play & Show
 Poster Session Marketing/Exemplary Programs/Catalog
 Preview
 11:45 a.m. –12:30 p.m. Lunch. Chat & chew at poster
 session
 12:30 – 6:00 p.m. Local activities
 6:00 – 6:30 p.m. Banquet Reception
 6:30 – 8:30 p.m. It's In the Cards
 Merlin Banquet

Sunday, Sept. 30

9:00 – 10:00 a.m. Last Chance to Win Breakfast.
 Annual Meeting
 10:00 a.m. – 1:00 p.m. Executive Meeting

All conference attendees are invited to the Sunday breakfast. Say goodbye to new and old friends as we enjoy a classic Las Vegas breakfast!

Conference Registration Fees:
 WASSA Member Rate: \$255
 Non-Member Rate: \$300
 Late Fee: \$25
 (Postmarked after September 5)
 Companion Fee: \$100
 Includes all conference meals except Mentor Lunch.

About the WASSA Newsletter

This publication, compiled and coordinated by the Newsletter/ Communications Committee, is printed quarterly. It is also posted on the WASSA Web site along with archived issues. It is mailed to WASSA members as a benefit of membership. To submit articles or notices, contact the newsletter committee chair or editor, Barbara A. Brown, astute@mail.summer.berkeley.edu

WASSA 2001 Officers and Committee Members

ANNUAL MEETING

2001 Carol Switzer, Chair, Arizona State U
2001 Alice Dionne, Eastern Washington U
2002 Jan Schnoor, U Alaska Anchorage
2003 David Nyman, Southern Utah U
2004 Margaret Landstrom, U British Columbia

CATALOG

2003 Linda Williams, Chair, CSU Long Beach
2002 Catherine Adamson, U Utah
2002 Cinda Henshaw, UC Riverside
2002 Charlotte Schmitz, UC Berkeley
2003 Virginia Linnell, Central Washington U

EXEMPLARY PROGRAMS

2001 Dan Wick, Chair, UC Davis
2001 Carol Switzer, Arizona State U
2002 Catherine Adamson, U Utah
2002 Curtis Grassman, UC Riverside
2003 Marcella Tyler, CSU Northridge
2003 Deborah Tatto, UC Berkeley

MARKETING

2002 Gary Penders, Chair, UC Berkeley
2002 Babette Jiminez, CSU Sacramento
2001 Becky Arce, UC San Diego
2001 Doreen Timm, Eastern Washington U
2003 Sari Small, CSU Northridge
2003 Gary Levy, U Wyoming

MEMBERSHIP

2001 Martin Barry, Chair, Oregon State U
2001 David Nyman, Southern Utah U
2001 Joann Edmond, CSU Los Angeles
2002 Ryan Durfee, Southern Utah U
2002 Karla Amber, Pepperdine U
2003 Karen Orser, U of Calgary

NEWSLETTER-COMMUNICATIONS

2001 Martin Barry, Chair, Oregon State
2001 Carmen Sprow, UC Davis
2002 Barbara Brown, UC Berkeley
2001 Maggie Herrington, Portland State U
2003 Doug Au, UC Berkeley
2003 Karen Orser, U Calgary

NOMINATING

2001 Michele Price, Chair, Western Oregon U
2002 Maggie Herrington, Portland State U
2003 Paul Aizley, U of Nevada Las Vegas

PROFESSIONAL STANDARDS

2001 Gary Penders, Chair, UC Berkeley
2001 Ryan Durfee, Southern Utah U
2002 Loy Lytle, UC Santa Barbara
2002 Linda Schoepflin, Washington State U
2003 Thomas Shugrue, Regis U
2003 Ara Pachmayer, Arizona State U

RESEARCH

2003 Shirley Lucas, Chair, Oregon State U
2001 Robert Mann, UC Santa Barbara
2001 Karen Crawford, UC Irvine
2002 Renee Neeley, Eastern New Mexico U
2002 Marj McMullen, U Alberta
2003 Peggy Nesbitt, U Montana Missoula

RESOLUTIONS

2001 Claire Cross, Chair, Southern Oregon U
2001 Joe Merrill, Washington State U
2002 Gary Levy, U Wyoming
2002 Carmen Sprow, UC Davis
2003 Cinda Henshaw, UC Riverside
2003 Steve Angelo, UCLA